

Principal Component Regression with Artificial Neural Network to Improve Prediction of Electricity Demand

Noor Ismail and Syamnd Abdullah
Department of applied statistic, University of Malaya, Malaysia

Abstract: *Planning for electricity demand is a key factor for the success in the development of any countries. Such success can only be achieved if the demand for electricity is predicted correctly and accurately. This study introduces a new hybrid approach that combines Principle Component Regression (PCR) and Back-Propagation Neural Networks (BPNN) techniques in order to improve the accuracy of the electricity demand prediction rates. The study includes 13 factors that related to electricity demand, and data for these factors have been collected in Malaysia. The new combination (PCR-BPNN) starts to solve the problem of collinearity among the input dataset, and hence, the reliability of the results. The work focuses also on the errors that recoded at that output stage of the electricity prediction models due to changes in the patterns of the input dataset. The accuracy and reliability of the results have been improved through the new proposed model. Validations have been achieved for the proposed model through comparing the value of three performance indicators of the PCR-BPNN with the performance rates of three major prediction models. Results show the outperformance of the PCR-BPNN over the other types of the electricity prediction models.*

Keywords: *Electricity demand, accuracy and reliability, PCR, MLR, BPNN.*

Received September 15, 2015; accepted October 18, 2015; published on line January 28, 2016

1. Introduction

Energy demand prediction models play a vital role for policy makers in developing and developed countries [14]. To draw efficient and active plans, it is very important that result of such prediction models be accurate and reliable. Demand on electricity, which is a type of energy is very important in Malaysia as the growth of population and economic affects positively on the rate of electricity consumption during 1995-2013. Economist in Malaysia depends on accurate prediction for the reason that a single percentage of error may lead to gain or loss of great budget (millions of ringgit) [4]. The overestimation of demand for electricity will create unnecessary idle capacity resulting in wasted financial resources while the underestimation of demand would lead to possible power failures devastating to the country's economy and life styles. Therefore, it will be advisable to use a model with high accuracy for predicting electricity demand so as to avoid costly mistakes [10].

There are many reasons behind the weak accuracy and reliability of the electricity prediction models. One of them is the properties of the input dataset, such multicollinearity among independent variables and pattern changes of the input variables [3]. Researchers employed different linear, nonlinear, and hybrid systems to get electricity prediction rate for different countries. One of the most important and widely employed methods is the expression of several

independent parameters in response to the dependence parameter. This method is nominated as Multiple Linear Regression model (MLR) [1]. A big advantage of MLR model is simplicity of computation to make predictions within a short time frame, involves lower costs and easy to use in explaining the relationship between input and output parameters [9]. According to [3, 5] MLR models were utilized to predict electricity demands in various countries. However, when independent variables are strongly correlated, MLR based models face serious difficulties (prediction rates considered as unreliable) [1]. One of the statistical approach for removing the multicollinearity problem and to reduce the complexity of independent variables is Principle Component Analysis (PCA) [15]. PCA is able to convert high correlated input data set to uncorrelated ones [6]. Therefore, various literature refer to using the PCA technique to select the optimal number of input features (independent variables) for any prediction models [1]. According to [10, 19], PCA technique was used with linear model to improve the accuracy prediction model for electricity demand. This combined approach is called the Principle Component Regression (PCR) model. However, PCA cannot overcome the inability of linear models to analyze nonlinear patterns of input dataset [12]. Therefore, researchers have been attempting to develop another model to capture nonlinear datasets because there are several nonlinear variables that affect electricity demand rates.

The Back-Propagation Neural Network (BPNN) model is a suitable method for handling nonlinear independent variables and provides a good accuracy prediction model [8, 17]. According to [2, 16] Artificial Neural Network (ANN) method can be applied for knowledge extraction without considering the nature of non-linearity. According to [6, 7], ANN based model were used as a tool to predict electricity demand in various countries. The results indicated that ANN model is better than other linear and nonlinear based models. Therefore, the advantage of a nonlinear tool, particularly ANN model is to provide better accuracy for prediction of electricity demand than other linear models including the ones that prefixed with PCA statistic technique [13]. On the other hand, ANN will not give accurate predictions when there are both linear and nonlinear variables in the same dataset [12]. It is clear that prediction models which depend on single technique are not an appropriate solution for getting accurate demand rates. At output stage of any single based prediction models high rates of residual errors will be obtained, which have great impact on accuracy rate.

To overcome the problems come from mixed pattern datasets, hybrid approach can be utilized, which is a combination of linear and nonlinear approaches. The best use of the combined approach is in capturing different patterns (linear and nonlinear) in the input dataset. There are many ways for achieving this combination. One of them, which followed by this work, is getting the preliminary prediction rate using linear approach. Then, recording the residual errors at the output stage of the linear part and analyse them using nonlinear approach. Finally, the preliminary results from the linear part and the output of the error analysis from the nonlinear part will be combined. The output of this combination gives the final rate of electricity prediction demand. The part of this work is also to find out the best combination (hybrid) approach in prediction of electricity demand for Malaysia. The main purpose for determining this hybrid approach is to improve the accuracy of electricity demand prediction rate. This work uses PCR, which is a combination of PCA and MLR, to get the preliminary prediction, and utilizes ANN to analyses the residual errors. The final combination approach that proposes by this work is PCR-BPNN.

2. Features and Data Collection

In this study thirteen parameters have been involved. These parameters are reflecting the long term based demand rate of electricity. The factors are population, GDP, GNP, Income per capita, employment, exports, imports, tourist arrivals, carbon emissions, Consumer Price Index, mean climate, industrial electricity and residential electricity. Factors can be grouped as below:

1. Some of the factors have economic reflect such as GDP, GNP, Income per capita, export, and import.

It is clear that growth of economic has great impact on energy consumption, such as electricity usage. The mentioned factors can be represented as main corners to estimate the level of economic growth for any country. Any growth of these factors means growth of economic, and in turn increases the consumption rate of electricity.

2. The second factor is reflecting the number of people in an area. It covers the population, the employment number, are tourist arrivals. It is clear that electricity consumption has direct relationship with number of usages. More population in an area means usage of more cooling systems, heating systems, more lightning, and more using electrical devices.
3. Some factors related to the environmental issues, such as carbon emissions and mean climate. Usage behaviour of electricity is changing with the climate and environmental impacts. Increasing temperatures or humidity, which are climate related, changes the type of the cooling or heating system usage in an area. Based on these factors, the consumption rates will increase or sometimes will decrease.
4. Some factors affect the consumer behaviour such as consumer price index. This factor always affects negatively on electricity consumption rare. Increasing the price mostly decreasing the rate of consumption of an area.
5. Finally, there are some factors have direct impact on increasing the rate of consumption, which are industrial electricity consumption rate and residential consumption rate. Expanding the area or the number of these factors has direct impact on increasing the rate of electricity consumption.

There are also many factors, such as end use rate of consumption, have not involved in this study as they have short term impact of the consumption and demand rate of electricity. The end use behaviour is changeable from day to day based on the daily requirements. This leads that their impact could not be considered in datasets that their time span is about 20-25 years. Records for these factors are collected from Malaysian Statistical Department. Historical data for these factors are coming in the time span of 1995 to 2013.

3. Work Methodology

The methodology of this work is going on through analyzing data in the following ways:

1. Finding out the reduction of features without losing information comes in all thirteen variables. Through this process two important things (reliability and complexity) can be analyzed.
2. Finding out a model that can predict electricity demand rate at higher accuracy.

To achieve that, this work utilizes the following techniques:

1. PCA as feature reduction.

- As prediction models; combination between MLR and BPNN with PCA.

The data analysis was conducted three methodologies based on principal components such as PCR as a linear model, PCANN as a nonlinear model and PCR-BPANN as a Hybrid approach

3.1. Dataset Preparation

Data that used for electricity prediction model have to meet the following:

- It should cover all information and independent variables that related to electricity demand.
- It should be as small dimensionality as possible to reduce the complexity and speed up the execution of the proposed model.

Meeting these two requirements is a trade-off. Involving as much variables as possible makes the model more reliable as variables that have impact on electricity will be included all in the calculation. Only in that case results of prediction models can be considered by decision makers. However, increasing number of independent variables leads to finding more correlated variables in the dataset. This will affect the reliability of the results, and increase the complexity and execution time of the proposed models. For that, at this stage the work involves all variables that have impact on electricity demand. At the same time, the work utilizes PCA technique to minimize the dimensionality size of the dataset in a condition of keeping the information that provided by the original dataset in the reduced one.

At this step, this work involves all thirteen variables that have been considered in most works and studies that conducted during 2000-2013. The work covers most variables that have impact on demand rate. The work checks the impact of this increase of variable number on the possibility of finding more correlated variables inside the dataset. Figure 1 shows the correlation among the variables.

As the correlation among the independent variables shows high records, results of any prediction models with such input dataset will not be considered as reliable, even, if it has high accuracy rates.

Variables	X ₁	X ₂	X ₃	X ₄	X ₅	X ₆	X ₇	X ₈	X ₉	X ₁₀	X ₁₁	X ₁₂	X ₁₃
X ₁	1.00												
X ₂	0.97	1.00											
X ₃	0.96	0.96	1.00										
X ₄	0.96	0.95	0.95	1.00									
X ₅	0.97	0.96	0.96	0.96	1.00								
X ₆	0.96	0.96	0.95	0.95	0.96	1.00							
X ₇	0.97	0.97	0.97	0.96	0.96	0.96	1.00						
X ₈	0.96	0.97	0.96	0.97	0.97	0.95	0.97	1.00					
X ₉	0.76	0.79	0.67	0.67	0.67	0.65	0.78	0.76	1.00				
X ₁₀	0.66	0.67	0.73	0.73	0.73	0.66	0.66	0.64	0.73	1.00			
X ₁₁	0.67	0.68	0.62	0.61	0.78	0.61	0.61	0.62	0.70	0.67	1.00		
X ₁₂	0.66	0.67	0.70	0.67	0.78	0.67	0.67	0.65	0.74	0.70	0.64	1.00	
X ₁₃	0.67	0.66	0.69	0.65	0.78	0.68	0.67	0.66	0.73	0.68	0.63	0.64	1.00

Figure 1. Correlation coefficient among the independent variables.

Therefore, this work is proposing the PCA technique for two reasons; the first is removing the correlation among the independent variables. The second is reducing the number of features to as minimum as possible in a condition that information in original dataset should be kept in the reduced dataset with a percentage of at least 80%. Only with the present of these two conditions, the optimum number of PCA that can be fed to the prediction models instead of original features can be determined. The satisfaction of these two conditions could be measured through Cumulative Percent Variance (CPV). From Figure 2, the change of CPV will be straight line at 97.52%, and accordingly, as shown in the figure, only four PCs can be considered for next stage as a less dimensional and uncorrelated input dataset.

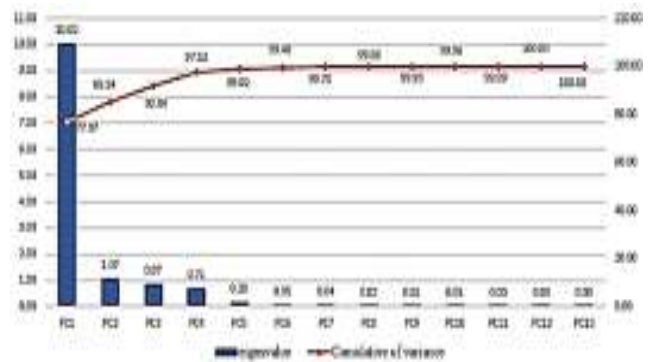


Figure 2. Explained eigen value and accumulative of variance.

Another test is to check the Eigenvalues that will be obtained through the process of PCA calculation, and compare them with CPV values. Table 1 shows the result of PCA calculation for finding the Eigenvalues. Table 1 provides the variance of the total original parameters. The four largest Eigenvalues in thirteen characteristic roots exist in a variable correlation matrix comparison of 10.02, 1.73, 0.87 and 0.71 respectively with the cumulative contribution to the total explained variance as %99.2. The first four PCs explain the most information from the original dataset and is extracted and therefore, the study can fed just five PC complements instead of all 13 independent variables. This process reduces the dimensionality of the independent variables, and keeps the original information up to 97.52%. The four selected PCs will be fed to three proposed electricity demand prediction models to find out the best accuracy. The aim of the use of three different techniques is to check the impact of linearity and nonlinearity patterns of input dataset on the accuracy rate of prediction models.

Table 1. Total of variance.

Components	Eigenvalue	Variance %	Cumulative %
PC1	10.02	77.070	77.07
PC2	1.07	8.267	85.34
PC3	0.87	6.703	92.04
PC4	0.71	5.478	97.52
PC5	0.20	1.507	99.02
PC6	0.05	.380	99.40
PC7	0.04	.296	99.70
PC8	0.02	.156	99.86
PC9	0.01	.069	99.93
PC10	0.01	.039	99.96
PC11	0.00	.021	99.99
PC12	0.00	.010	100.00
PC13	0.00	.004	100.00

Finally, this work checks whether the reduced dataset has information from all or not. Table 2 shows each PC with reference to the independent variables. Each component related some original independent variables such as PC_{1i} that more related to the population POP, GDP, GNP, Income per capita, exports, imports, tourist arrivals, industrial electricity and residential electricity factors and PC_{2i} that more related to climate. While PC_{3i} related to Consumer Price Index (CPI) factor. The last component PC_{4i} related to carbon emissions (CO_2) factor.

Table 2. Relation between PCs and included variables.

	Component			
	PC1	PC2	PC3	PC4
POP	0.985	-0.076	0.008	0.033
GDP	0.988	-0.006	0.032	0.087
GNP	0.991	0.086	-0.031	-0.070
Income Per Capita	0.916	0.141	-0.034	-0.031
Employment	0.979	0.038	-0.027	-0.148
Export	0.981	-0.093	0.039	0.097
Import	0.986	-0.006	-0.033	0.013
Tourist	0.986	0.087	-0.032	-0.032
CO2	0.661	-0.215	-0.075	0.708
CPI	0.365	-0.432	0.817	-0.106
Climate	-0.087	0.873	0.424	0.217
Industrial Electricity	0.915	0.144	-0.093	-0.316
Residential Electricity	0.986	0.085	-0.051	-0.076

3.2. Linear Model

PCR is selected as a linear model to check the respond of such type models to different pattern types of input dataset. PCR is resulted from the combination of MLR and PCA. First, PCA will convert P number of features to K number of PCs (K should always be less than P). Then, the output of PCA will be fed to MLR to get the prediction rate. The general equation for a PCR model can be formulated as shown in Equation 1.

$$Y_i = \beta_1 PC_{1i} + \beta_2 PC_{2i} + \dots + \beta_k PC_{ki} + \varepsilon_i \quad (1)$$

Where Y_i : The dependent variable (gives the prediction rate of electricity demand in Kote), PC_i : The new uncorrelated independent variables, BK : Theregression coefficient of PC_i , and ε_i : The random error.

According to Tables 1 and 2, the value of K is equal to four. Therefore, the final equation of the MLR based prediction model will be as shown in Equation 2:

$$Y_i(Ktoe) = 0.959 \times PC_1 + 0.151 \times PC_2 - 0.070 \times PC_3 - 0.196 \times PC_4 \quad (2)$$

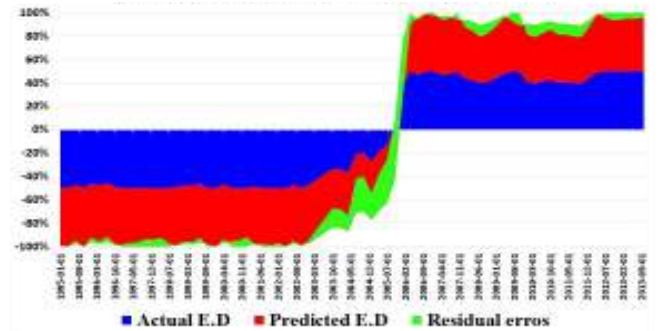


Figure 3. Predicted rate with PCR and actual rate of demand.

Figure 3 shows the comparison between the regression model PCR and electricity consumption rate Ktoe in the actual dataset with the residual errors. This work utilizes MSE, RMSE, and MAPE as performance indicators to evaluate the errors. The indicators show 0.014, 0.121 and 41% respectively. The figure shows that not all parts for the both curves are fit. It means that PCR can fit and map input and output up to high accuracy. However, some nonlinear parts of the target still not fit in the picture.

3.3. Nonlinear Model

To test the input dataset patterns with nonlinear model, this work proposes the PCBPNN. The architecture is consisting of PCA and BPNN. Any BPNN, typically, has three layers as shown in Figure 4. Input layer, hidden layer, and output layer. At each layer there are nodes called neurons. The number of each node at each layer changes with the change of the problem. The nodes at input layer are four, which is the number of the selected PCs. The output layer has only one node, which gives the predicted rate of electricity demand.

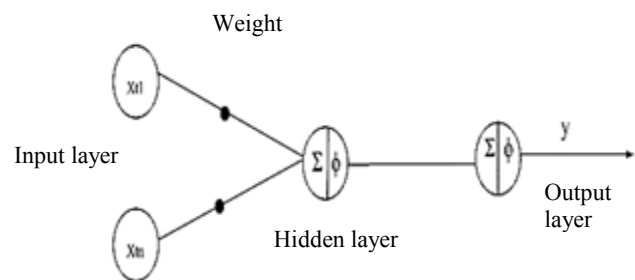


Figure 4. Architecture of PCANN.

$$y_i = f \left(\sum_{i=0}^n w_{ij} x_{ij} \right) \quad (3)$$

Where Y_j : The output of node j , $f(\cdot)$ is the transfer function, w_{ij} : Connection weight between node j and node i in the lower layer, and X_{ij} : The input signal from the node i in the lower layer to node j .

Equation 3 presented the neural network was a biased weighted sum of the inputs and passed the activation level through a transfer function to achieve the output. The units of a network were ordered in the form of layered feed forward structure.

The most popular neural network training algorithm is BPNN. This type of NN is used for the regression purpose. It is proven that the architecture of BPNN is a proper model for a long term based prediction models [16]. Therefore, this work uses BPNN, which also can capture more nonlinearity dataset. The hidden layer part of NN supports such approach to learn nonlinear pattern. This study used only one hidden layer.

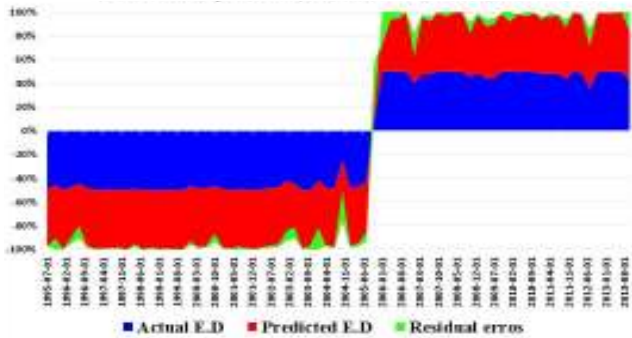


Figure 5. PC-ANN model and actual data on electricity demand.

Figure 5 provides the results of applying the PC-BPANN nonlinear model. The model can provide more accurate than the linear model. The MSE, RMSE and MAPE for PC-BPNN model are 0.010, 0.1039 and 12%.

3.4. Hybrid Approach

The combination of two sub-models PCR and BPNN formed PCR-BPNN. Each sub model has its own output, and the idea of PCR-BPNN is combining these two outputs together in order covering both linear and nonlinear patterns of input dataset in the prediction process.

The methodology of this hybrid approach is built on computing the direct relation between the demand rate with changes of linear and nonlinear parts of input dataset. This concept is illustrated in Equation 4.

$$y_t = L_t + N_t \tag{4}$$

Where L_t : The linear component analysis and N_t : The nonlinear component analysis.

To estimate both components the following techniques are implemented: PCR is applied to provide a preliminary prediction electricity demand model. Moreover, the work also obtains residual errors from the PCR using Equation 5.

$$e_t = y_t - \hat{L}_t \tag{5}$$

Where e_t : The error (residual) from PCR model at the time t , y_t : Dependent variable of electricity demand and \hat{L}_t : The preliminary predicted value for the time t .

Finally, BPNN is utilized for the resulting error (residual) from a linear model (PCR) employing Equation 6.

$$e_t = f(e_{t-1}, e_{t-2}, \dots, e_{t-n}) + \varepsilon_t \tag{6}$$

Where: f : Nonlinear function is determined by BPNN model and ε_t : The random of error. Then, the output is a prediction of residual from the BPNN is denoted \hat{J} and the combined predict will be shown the by this Equation 7.

$$\hat{y} = \hat{L}_t + \hat{J}_t \tag{7}$$

Therefore, we arrive at the preliminary prediction via the PCR linear model then improve the total prediction for the nonlinear model using BPNN. The idea of this hybrid system can be found in [18]. Figure 6 shows the framework for this combination method.

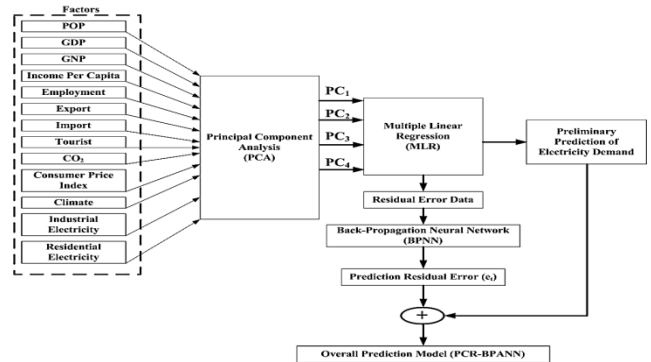


Figure 6. Framework of hybrid approach.

From Figure 7, it becomes clear that residual error minimized with the use of PCR-BPNN, if compared with Figures 5 and 6.

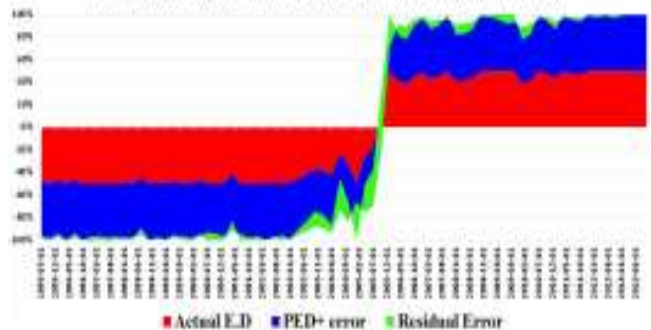


Figure 7. Hybrid approach (PCR-BPNN) and actual data on electricity demand.

4. Results and Discussion

Table 3 gives the performance indicator values for linear model PCR, nonlinear model PC-BPNN and hybrid approach PCR-BPNN. The table also shows the accuracy of the powerful machine learning tool, which is PC-Support Vector Machin (SVM). The table shows that PCR-BPNN also gives better accuracy that SVM.

Based on the mean square error (MSE), Root Mean Square Error (RMSE) and Mean Absolute Percentage Error (MAPE) those three different criterions to measure values of error. The result showed that the PCR-BPNN model has better prediction accuracy than other two models which justify its selection as appropriate method, that can reduce residual error and generate more accurate results.

Table 3. Compression of performance indicators.

Statistical Parameters	PCR Linear	PC-BPNN Nonlinear	PC-SVM Nonlinear	PCR-BPNN Hybrid
MSE	0.014	0.010	0.012	0.0044
RMSE	0.121	0.1039	0.1167	0.0665
MAPE%	41%	7%	5.6%	5%

5. Conclusions

The accuracy of predicting the electricity demand is quite important for effective implementation of energy policy. This paper has demonstrated that a more accurate prediction model for electricity demand is a hybrid approach that jointly combines with PCR linear model and BPNN nonlinear model. The goal of utilizing this combination was to capture different patterns of the independent variables. PCR model is a suitable model to cover a linear dataset. However, the PCR model could not capture the nonlinear data part.

Using BPNN model provides the work ability to accurately fit the nonlinearity part to the residual error that PCR model could not capture. BPNN model provided a better result than PCR model based on the performance indicator measures. Hence, the significance of this combination method is improving the prediction electricity demand model. Additionally, the results of RMSE and MAPE show that this hybrid system is more accurate than any other model. Finally, this hybrid combination can be used in modelling applications in other areas.

References

- [1] Al-Alawi S., Abdul-Wahab S., and Bakheit C., "Combining Principal Component Regression and Artificial Neural Networks for More Accurate Predictions of Ground-Level Ozone," *Environmental Modelling and Software*, vol. 23, no. 4, pp. 396-403, 2008.
- [2] Ali Q. and Dawwd S., "On Demand Cipherring Engine Using Artificial Neural Network," *the International Arab Journal of Information Technology*, vol.13, no. 4, July, 2016.
- [3] Apadula F., Bassini A., Elli A., and Scapin S. "Relationships Between Meteorological Variables and Monthly Electricity Demand," *Applied Energy*, vol. 98, no. 4, pp. 346-356, 2012.
- [4] Bazmia A., Davoodya M., and Zahedia G., "Electricity Demand Estimation Using an Adaptive Neuro-Fuzzy Network: A Case Study from the State of Johor, Malaysia," *International Journal of Chemical and Environmental Engineering*, vol. 3, no. 4, pp. 284-295, 2012.
- [5] Bianco V., Manca O., and Nardini S., "Electricity Consumption Forecasting in Italy using Linear Regression Models," *Energy*, vol. 34, no. 9, pp.1413-1421, 2009.
- [6] Chia K., Rahim H., and Rahim R., "A Comparison of Principal Component Regression and Artificial Neural Network in Fruits Quality Prediction," in *Proceedings of IEEE 7th International Colloquium on Signal Processing and its Applications*, Penang, Malaysia, pp. 261-265, 2011.
- [7] Ekonomou L., "Greek Long-Term Energy Consumption Prediction using Artificial Neural Networks," *Energy*, vol. 35, no. 2, pp. 512-517, 2010..
- [8] Ghanbari A., Ghaderi S., and Azadeh M., "Adaptive Neuro-Fuzzy Inference System vs. Regression Based Approaches for Annual Electricity Load Forecasting," in *Proceeding of the 2nd International Conference on Computer and Automation Engineering*, Singapore, pp. 26-30, 2010.
- [9] Kavaklioglu K. Ceylanb H., Ozturka H., and Canyurta O., "Modeling and Prediction of Turkey's Electricity Consumption using Artificial Neural Network," *Energy Conversion and Management*, vol. 50, no. 11, pp. 2719-2727, 2009.
- [10] Li Y. and Dongxiao N., "Application of Principal Component Regression Analysis in Power Load Forecasting for Medium and Long Term," in *Proceeding of the 3rd International Conference on Advanced Computer Theory and Engineering*, Chengdu, China, 2010.
- [11] Pai P. and Lin C., "A Hybrid ARIMA and Support Vector Machines Model in Stock Price Forecasting," *Omega*, vol. 33, no. 6, pp. 497-505, 2005.
- [12] Pao H., "Comparing Linear and Nonlinear Forecasts for Taiwan's Electricity Consumption," *IEEE Transactions on Computers*, vol. 31, no. 12, pp. 2129-2141, 2006.
- [13] Reddy S. and Momoh J., "Short Term Electrical Load Forecasting using Back Propagation Neural Networks," *IEEE Transactions on Computers*, Washington, United States, pp. 1-6, 2014.
- [14] Suganthi L. and Samuel A., "Energy Models for Demand Forecasting-a Review," *Renewable and Sustainable Energy Reviews*, vol. 16, no. 2, pp. 1223-1240, 2012.
- [15] Ul-Saufie A., Yahya A., and Ramli N., "Improving Multiple Linear Regression Model using Principal Component Analysis for Predicting PM10 Concentration in SeberangPrai, Pulau Pinang," *International Journal of Environmental Sciences*, vol. 2, no. 2, pp. 415-422, 2011.
- [16] Utojo U. and Bakshi B., "Connection between Neural Networks and Multivariate Statistical Methods: An Overview," in *Proceeding of Neural Networks in Bioprocessing and Chemical Engineering*, San Diego, USA, 1995.
- [17] Zhang G., Patuwo E., Hu M., "Forecasting with Artificial Neural Networks::The state of the Art,"

International Journal of Forecasting, vol. 14, no. 1, pp. 35-62, 1998.

- [18] Zhang P., "Time Series Forecasting using a Hybrid ARIMA and Neural Network Model," *Neurocomputing*, vol. 50, pp. 159-175, 2003.
- [19] Zhang J., Yang X., Shen F., Li Y., Xiao H., Qi H., Peng H., and Deng S., "Principal Component Analysis of Electricity Consumption Factors in China," in *Proceeding of the International Conference on Future Energy, Environment, and Materials*, pp. 1913-1918, 2012.



Noor Ismail received PhD from Queensland University of Technology in 2000. Currently, she is working as professor in the Department of Applied Statistics and Dean of Faculty of Economic and Administration. She has published 30 numbers of articles.



Syamnd Abdullah received MSc degree in Mathematics and computing in Belgorad State University at 2011. He is now a PhD candidate fellow in University of Malaya. His research interests include: Data mining, neural network and modelling by hybrid approach.